

# STANDARD F LH FIA

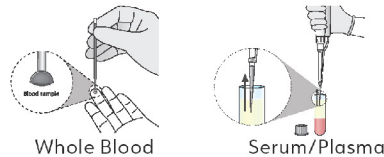
STANDARD F LH FIA is a fluorescent immunoassay for the quantitative measurement of LH level in human serum, plasma and whole blood. The test is performed to help evaluate fertility issues, functions of reproductive organs (ovaries or testicles), or to detect the ovulation.

- Automatic strip recognition by reading the information stored in 2D barcode
- Reagents can be stored at room temperature
- Whole blood, serum and plasma specimens available

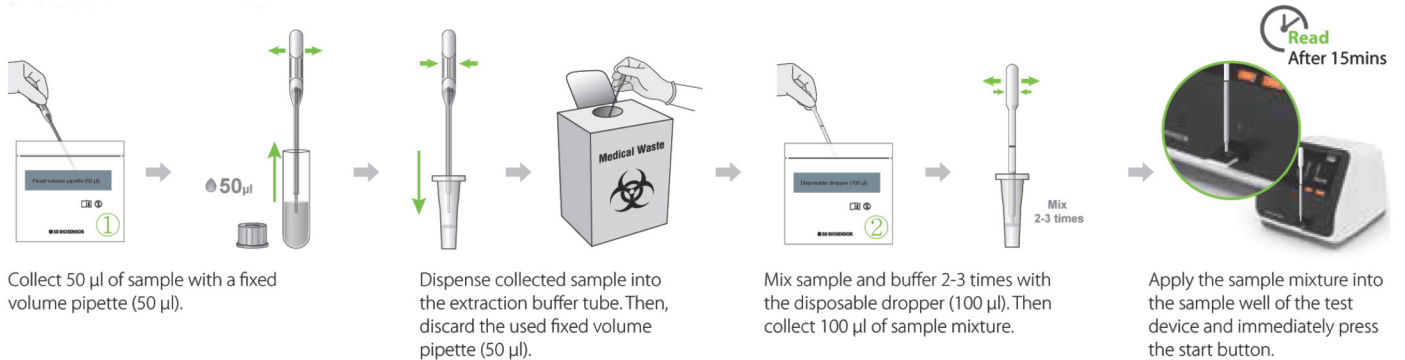


Specification	
Specimen Volume	Whole Blood, Serum, Plasma
Specimen type	20 µl
Measurement Range	1 - 100 mIU/ml (during ovulation phase)
Reference Range	14.0 - 95.6 mIU/mL (during ovulation phase)
Testing Time	15 mins
Storage Condition	2 - 30°C / 36 - 86°F

## METHODS OF SAMPLE COLLECTION



## TEST PROCEDURE



## METHOD COMPARISON

Reference Method vs STANDARD F LH FIA	
Correlation vs ECLIA Method	$y=0.9916x+0.0866$ ; $R=0.9921$ ; $n=210$
CV%	QCL=8.3% / QCM=8.0% / QCH=8.2%
Differ (%)	Within 15%

## ORDERING INFORMATION

Category	Product	Pack Size
Hormone	STANDARD F LH FIA	20 Test
	STANDARD F LH Control	Lv1 x 10 / Lv2 x 10